



SQUARES to Circles

.....

A Capital Campaign for

**THE
JANUS
SCHOOL**

SQUARES to Circles

BY A FORMER JANUS STUDENT

Confusion, misunderstanding, and frustration
Lack of communication, or some other unknown reason
For my attempts on getting homework done on time.

By and by,
Once in a while, I'd even cry.
I didn't know, didn't understand

They cared quite a bit,
But didn't seem to know the answer
To my complications, to my problems
Why I was struggling was all they knew,
Learning disabilities, but just a few.

Five to be exact,
Yes, lucky five.
And lucky me,

To be the beehive of those honeybee-like disabilities
Stinging me, those honeybee disabilities,
Thwarting my understanding of my schoolwork.

I was a circle, one lonely circle,
In a school full of squares,
The school itself is a square too.
The squares were all normal, and the circles were not.

Then, a beekeeper came calling to me.
A beekeeper they call "The Janus School."
Just what I need, a school for people like me,
For those others with learning disabilities,
And there I found friends, help in school, and understanding.

Finally, I was with my fellow circles.
Finally, It was just circles with circles.
No more not fitting, no more despair,
Despite all my troubles,
My comprehension was there.



SQUARES to Circles

The campaign's name is taken from the poem on the left, written by a 16-year-old Janus student. It speaks of problems experienced by people with learning differences as they strive to make sense of their world and of the poet's joy at discovering there was a place where she fit in "despite all my troubles."



Parker's Story

"Before I went to Janus, I was a shell. I was basically empty, not very talkative, and not passionate. I was devoid of character. But, while I was there, I created myself.

I created a new me — the me that was always there but was denied its right to shine. Janus was a place of kindness; my teachers knew from day one that I was more than that shell and they wanted to see who I was."



Dear Friends of Janus,

"I was a circle, one lonely circle,
In a school full of squares."

The poet's words capture how most of our students feel before they attend The Janus School. The poet writes of "confusion, misunderstanding, and frustration" wrapped in an acute awareness of being different.

That student was fortunate because in 1991, a group of four parents decided to create a school where children with learning differences could learn skills they would need to succeed in life.

34 years later, The Janus School remains the only independent K-12 day school in central Pennsylvania dedicated to serving students with language-based learning disabilities. Our recent re-accreditation and the changes necessitated by

Sincerely,

the pandemic caused school leaders to re-assess Janus holistically.

We realized that, to continue to provide the Janus education we know works, we must do two things:

- Invest in Teaching and Financial Aid
- Modernize Our Building

The funds raised by the Squares to Circles Campaign will create a better, more accessible Janus School. Please join us to give Janus "circles" the tools they need to learn, understand, and succeed in a world designed for "squares."

We firmly believe every "circle" deserves to find their place.

Two Goals to Strengthen Janus

Staff and board leaders have identified two goals vital to sustaining Janus's ability to provide an exceptional education for central Pennsylvania's circles. Implementing these goals is the purpose of this special campaign.

One

INVEST IN TEACHING AND FINANCIAL AID

Increased resources benefitting teachers will improve our ability to attract and retain the very best faculty by increasing salaries and improving benefits. More scholarships and financial aid will make a Janus education more affordable.

Two

MODERNIZE OUR BUILDING

A key expansion and technology upgrades will create a better, safer learning environment for our students and teachers.

Heather Strunk
HEATHER STRUNK
Head of School

Carrie Nunan Hill
CARRIE NUNAN HILL
Squares to Circles Campaign Chair

Lisa Hershey
LISA HERSHEY
President, Board of Trustees





Madison's Story

"My former school was overwhelming. I never really spoke much. I felt behind most of the time. At Janus, I was able to connect with people like I hadn't been able to before and get over my anxiety.

I quickly found myself appreciating the school more and more. It's much easier to join in

here. The adaptability of the teachers is nice, and people have noticed over the years how I've grown."

1 in 5

*Children in the United States Struggles with a Language-Based Learning Difference**

*Yale Center for Dyslexia and Creativity



Not all great minds think alike

Because our students learn differently, Janus teaches differently. We focus on educating each child by helping them discover how they learn. Our students confront their learning differences head-on and become their own biggest advocate in negotiating school, work, and life.

PERSONALIZED LEARNING

At Janus, we identify each student's strengths and opportunities for growth, establishing individual goals and education paths. Classes are grouped by ability, not age, and students advance to the next level when they are ready, not just once a year.

INTEGRATED SUPPORT & A WHOLE-CHILD FOCUS

Each student is supported by a team of teachers, language therapists, and a counselor through a whole-child focus that includes academics, social, and personal support. What begins in the classroom frequently continues at home with additional support for families.

ENGAGING EXTRACURRICULARS

We believe they are anything but extra. Clubs, athletics, art, music, and more help students develop social skills, find new interests, raise self-esteem, and build strong relationships.

INSPIRED SPACES

Our 40-acre campus in Mount Joy provides a range of safe, inspiring indoor and outdoor spaces. Our facilities feature specialized technology and tools to help students channel their energy to support their learning profiles.

Our goal is to teach our students to be independent lifelong learners and thinkers.

75

K-12 Students

Average Class Size
5

AREAS SERVED

33

School Districts from 6 Central PA Counties

Faculty & Staff

36

5:1

Student-to-Teacher Ratio

DIAGNOSES OF JANUS STUDENTS

Language-based Learning Disabilities

Dyslexia

Math-based

Central Auditory Processing Disorder

Language Processing Disorder

Attention Deficit Hyperactivity Disorder (ADHD)

Autism Spectrum Disorder (ASD)

Executive Function Difficulties (EFD)

Nonverbal Learning Disorder (NVLD)

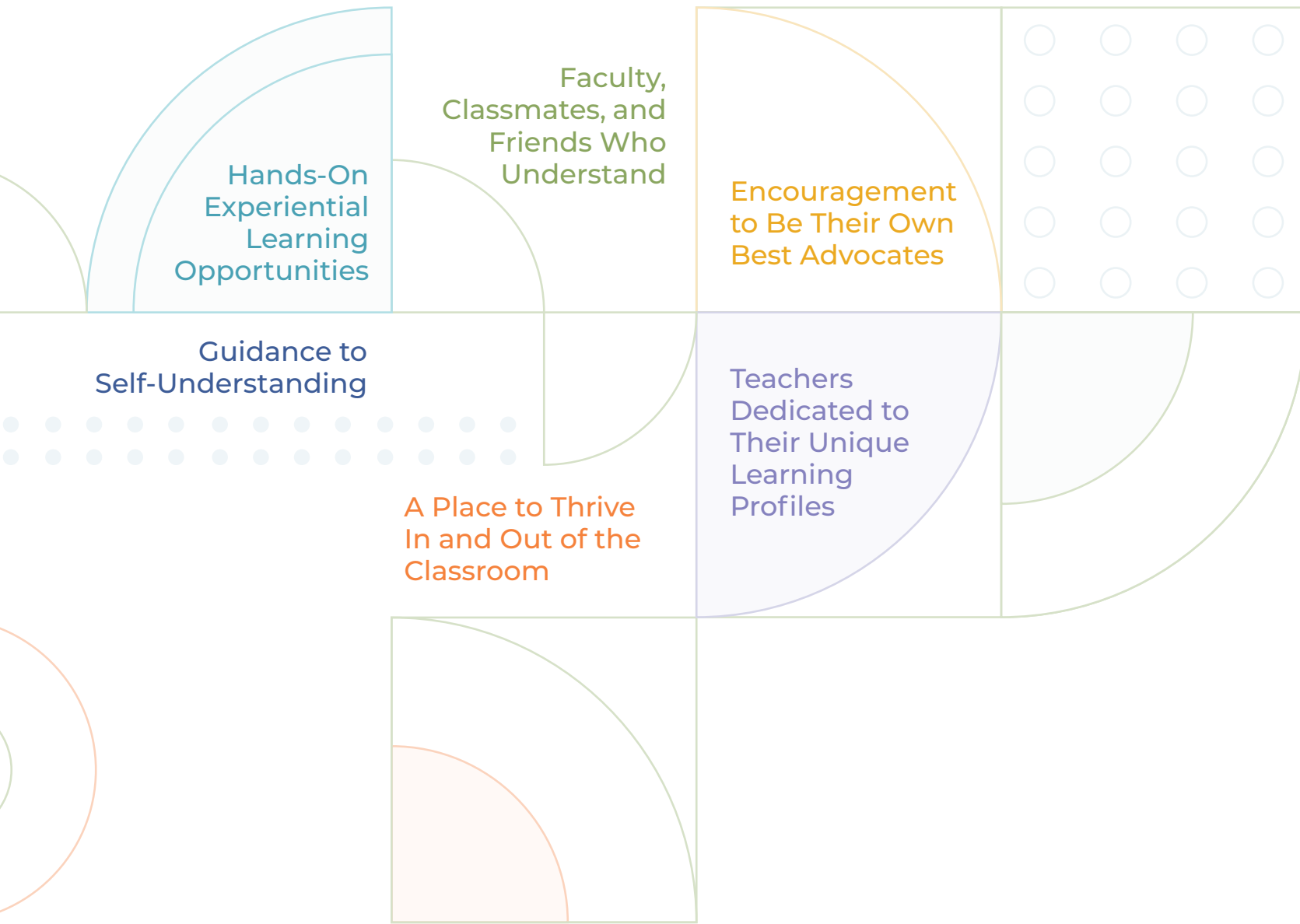
3

Learning Divisions

LOWER K-5
MIDDLE 6-8
UPPER 9-12

Discovering “A school for people like me”

In the poet’s words, Janus students are like circles. They have spent years trying to fit themselves into square holes at other schools. Then they discovered Janus. Here they find ...



Here the circles find acceptance. They learn how to comprehend and move around in the square world. And when children are empowered with the right tools and support, their feelings of frustration and despair turn to hope and joy.

“No one in this area can offer individualized teaching and an educational experience like The Janus School.”

ROGAN MOTTER
One of Janus’s First Nine Students in 1991



“Frank’s teachers gave him the tools to push for what he needs. They gave me peace of mind.”

BETH GINGRICH
Parent of Frank Gingrich, Class of 2022

AJ’s Journey to Janus

By 5th grade, AJ had become so stressed out about school that he developed several tics and started hiding in the classroom closet because he felt anxious and hopeless.

Then he visited Janus.

AJ’s mom recalls, “The most important thing I heard on the tour was, ‘We are going to teach your child HOW to be a student.’ **The teachers at Janus encouraged him to take charge of his own learning and supported him through every challenge and triumph. Today, he is a different person—confident and happy.** There are no words to express how life-changing this school really is for students and their families!”

One

Invest in Teaching ...

Teachers are the most important piece of the Janus experience. Their skills, passion for teaching, and dedication to every student empower the circles to feel accepted—just as they are.

REWARDING THEIR COMMITMENT

Our teachers could earn more money at a public school. They chose Janus because they love the sense of community, working together as a cohesive team, and the chance to make a significant difference in every student's life. School leaders believe Janus must build the capacity to reduce the salary gap with other schools.

"Working at Janus is very rewarding. I teach amazing students at their individual level, helping each one push past their own challenges."

DEBRAH HOFFMAN
Teacher

Janus must increase compensation to be competitive for teachers. That process has begun with higher salaries, more professional development opportunities, and matching funds for retirement plan contributions. The Squares to Circles Campaign will fund increased investments in our teachers.

We have the opportunity to make sure Janus continues to have the best teachers.

Meet Olivia

To enable Olivia to attend Janus, her family makes a 30-minute drive to and from Kutztown to Reading each day to meet the Janus bus. "Every day here is so amazing, and that's because of the teachers," Olivia said.

"They're incredibly helpful, and they really care about me."

Before Janus, I couldn't even think about the future. The teachers here helped turn that around."



One

and Financial Aid

Family demographic trends indicate that Janus will need to provide increasing amounts of financial aid, as fewer families are able to pay full tuition. Additional scholarships and higher need-based awards will enable more circles to find their place to belong.

Like most non-public schools, Janus does not charge the full cost of providing an education for our students. Our tuition reflects the special individualized attention each student receives. Families can obtain funding from their student’s school district, although the amount varies widely and can be challenging to secure.

PRICE OF A JANUS EDUCATION

Tuition	
K-5	\$35,000
6-11	\$40,400
12	\$45,000
Transportation	\$3,400
Flex Fees speech, language and/or occupational therapy	up to \$5,000



39%
Tuition Paid by
School Districts

22%
Tuition Paid by
Families

37%
Philanthropy
and Grants

2%
Other Income

“Families wonder, how long can we afford this? Especially if they have multiple children, since learning differences tend to run in families.”

ROBIN PAYNE
Director of Admissions



Honoring Jan

Jan Gillespie, our amazing former Head of School, retired in 2023 after 12 years at Janus. To honor her life-changing impact on so many students, families, and teachers, the Squares to Circles Campaign will create the Jan Gillespie Fund for Educational Excellence. The Jan Gillespie Fund will support Janus’s investments in both teachers and financial aid.



Ozzy's Transformation

When Ozzy started his Janus journey in 7th grade, he was reading well below grade level. With the help of his teachers, he learned not only to read but to love reading. After his senior year, he enrolled in Janus’ Transitions program. It changed his perspective and outlook on his future. **The program meant so much to him that he paid the tuition for the third year himself.** Today, Ozzy works for Amazon, has his own personal library, and is taking college courses.



Two

Modernize Our Building

School design standards have changed since our building was constructed in 1998. Major renovations to the front entrance will incorporate up-to-date security features while enhancing collaboration and conveying a sense of welcome to all visitors.

A SAFER SCHOOL

A new, secure, enclosed lobby will require visitors to be screened a second time before gaining access to the school. Security cameras will monitor interactions with staff. The entrance design allows staff or faculty to greet and escort each guest personally, fostering both security and hospitality. In addition, emergency alarm systems will be strategically installed throughout the school, enabling a rapid response in an emergency.



WARMTH AND WELCOME

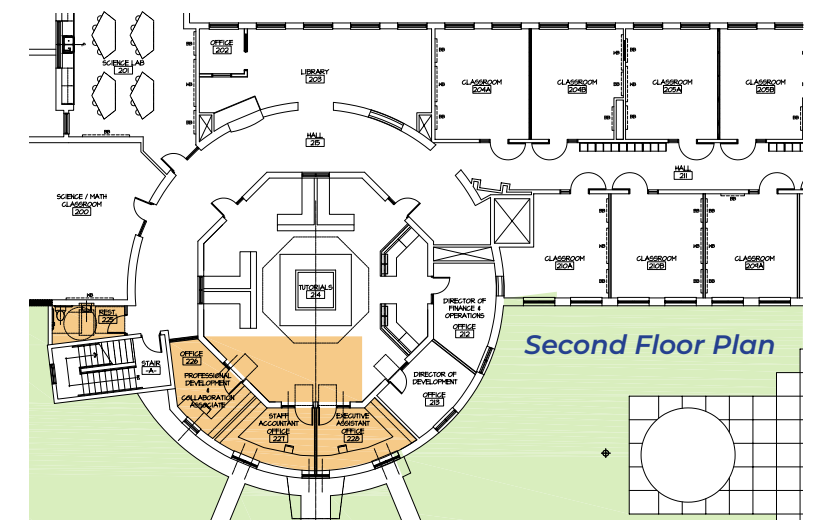
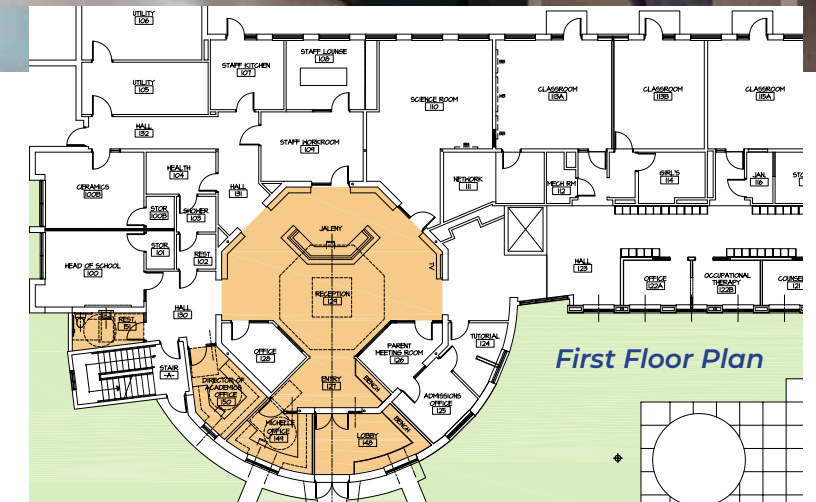
The reimagined entrance will not only enhance student safety, it will also be more beautiful. With refreshed design elements and an updated reception area, the front of the school will reflect the excellence and care that define the Janus experience.

COLLABORATION AND EFFICIENCY BY DESIGN

Reconfigured and newly created offices will bring departments with shared responsibilities (Academics and Admission, Finance and Development) closer to one another. Their new proximity will foster greater coordination, quicker decision-making, and a stronger sense of unity across mission-critical areas. A more cohesive working environment mirrors Janus's collaborative spirit and will help us to better serve our students and families each day.

MORE RESTROOMS

The renovations will add a unisex bathroom for faculty, staff, and students on both floors.



We need your help to make our facility an even better place to learn.

SQUARES to Circles

A CAPITAL CAMPAIGN FOR THE JANUS SCHOOL

Investing in our teachers, making Janus more affordable, and modernizing our facilities will require a minimum community investment of \$3.5 million. Your support is essential for The Janus School to have the resources to teach differently, because the circles who attend Janus learn differently.

SUMMARY OF CAPITAL CAMPAIGN OBJECTIVES

Investments in teaching and increased financial aid Jan Gillespie Fund for Educational Excellence	\$1,650,000
Construction and renovations	\$1,600,000
Marketing and campaign costs	\$250,000
MINIMUM GOAL	\$3,500,000

ANTICIPATED SOURCES OF FUNDING

Cash gifts, multi-year pledges, gifts-in-kind, planned/estate gifts	\$2,289,000
State grants (secured)	\$1,211,000
TOTAL	\$3,500,000



Gifts Needed to Reach \$3,500,000

Donors may pay their pledges over a period of up to five years and may also complement a current gift with an additional pledge/planned gift as part of their estate planning.

Number of Gifts Needed	Amount of Gift (in range of)	Amount in Category	Cumulative Total
1	\$750,000	\$750,000	\$750,000
1	\$500,000	\$500,000	\$1,250,000
1	\$250,000	\$250,000	\$1,500,000
5	\$100,000	\$500,000	\$2,000,000
8	\$50,000	\$400,000	\$2,400,000
16	\$25,000	\$400,000	\$2,800,000
25	\$10,000	\$250,000	\$3,050,000
40	\$5,000	\$200,000	\$3,250,000
150	\$1,000	\$150,000	\$3,400,000
Many	< \$1,000	\$100,000	\$3,500,000

“Focusing this campaign on investments in our teaching and learning, increased financial aid, and smart facility improvements will position Janus well to serve the next generation of students and families. It is important that this effort strengthens our commitment to one of our greatest assets, the Janus faculty.”

STEVE EVANS
Trustee and former
President of the Board



The K–12 school years are Janus’s brief window of opportunity to help students with learning differences. This is our chance to help them before they are thrust into a world built for squares.

YOUR SUPPORT WILL MAKE STUDENT SUCCESS POSSIBLE FOR THE NEXT 30 YEARS

Please join us in helping The Janus School empower more children with learning differences to achieve their full potential.



For More Information, Contact:

HEATHER STRUNK

Head of School

hstrunk@TheJanusSchool.org

717.653.0025 x101

ASHLEE HURLEY

Director of Development

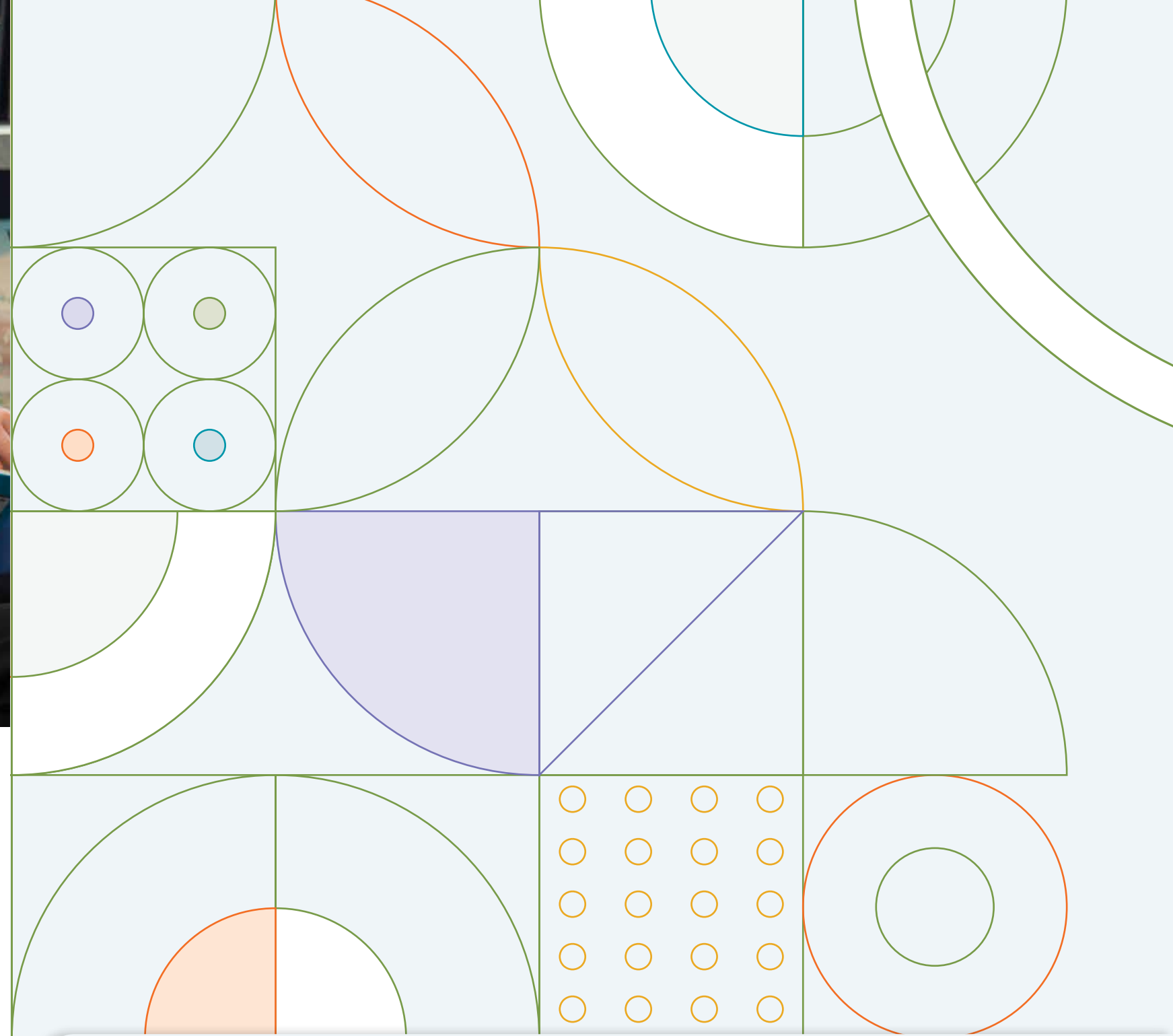
ahurley@TheJanusSchool.org

717.653.0025 x105

**THE
JANUS
SCHOOL**

205 Lefever Road
Mount Joy, PA 17552

TheJanusSchool.org



SQUARES to Circles

“Just what I need,
a school for people like me,

For those others with
learning disabilities,

And there I found friends, help in school,
and understanding.

Finally, I was with my fellow circles.

Finally, It was just circles with circles.

No more not fitting, no more despair,

Despite all my troubles,

My comprehension was there.”

